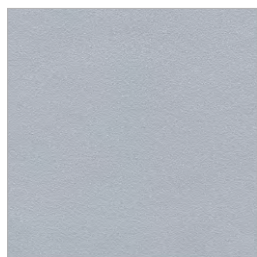
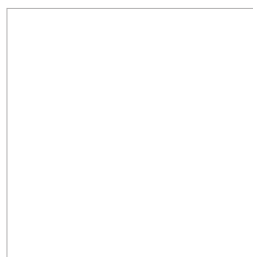


FINITURE STRUTTURA / STRUCTURE FINISHES

Verniciato epossidico | Epoxy varnished



02 grigio alluminio
grey aluminium



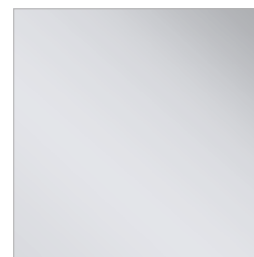
04 bianco lucido
white polish



14 grigio creta lucido
grey clay polish



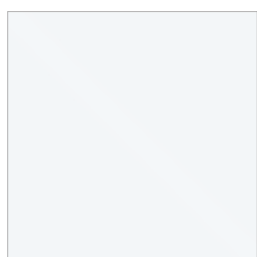
15 grigio grafite opaco
matt grey graphite



11 cromo lucido
chromium plated

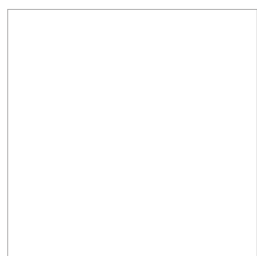
FINITURE PIANO / TOP FINISHES

Vetro temperato | Tempered glass

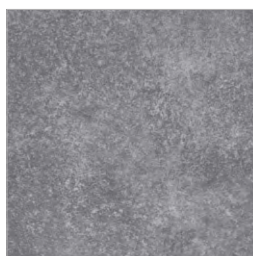


66 extrabianco
extrawhite

Laminato | Laminated



88 bianco opaco
matt white



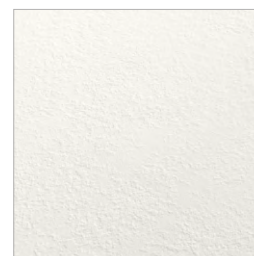
L2 beton
beton



L3 porfido nero
black porphyry

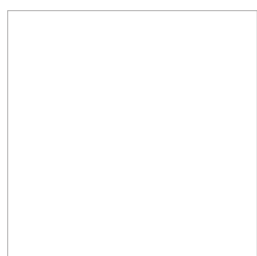


L4 porfido tabacco
tobacco porphyry

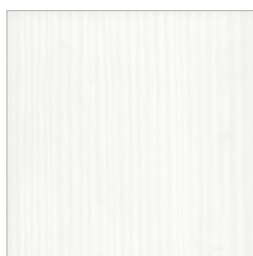


L6 bianco pietra
white stone

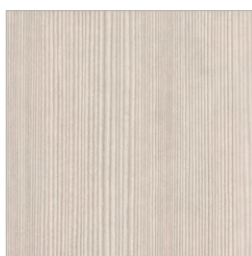
Melaminico | Melamine



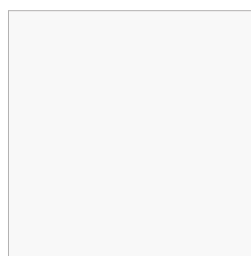
88 bianco opaco
matt white



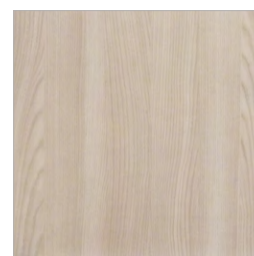
8A bianco larice
white larch



8B larice chiaro
light larch



8F bianco opaco
matt white



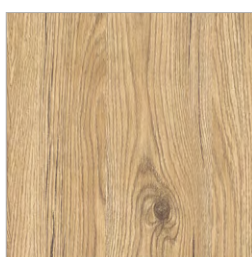
8G olmo chiaro
light elm



8I grigio creta opaco
matt grey clay



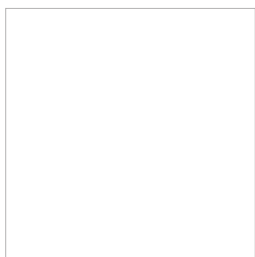
8L grigio grafite opaco
matt grey graphite



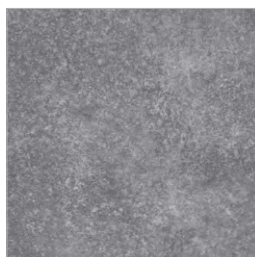
8P rovere crudo
raw oak

FINITURE ALLUNGA / EXTENSION FINISHES

Laminato | *Laminated*



88 bianco opaco
matt white



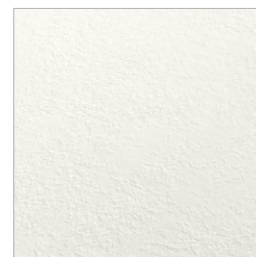
L2 beton
beton



L3 porfido nero
black porphyry

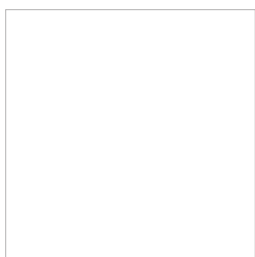


L4 porfido tabacco
tobacco porphyry

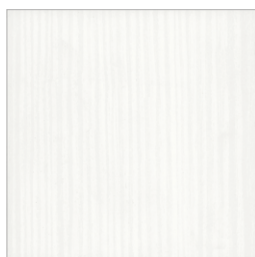


L6 bianco pietra
white stone

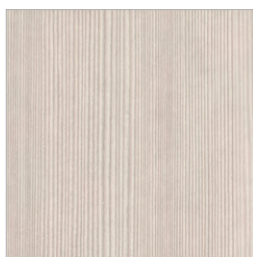
Melaminico | *Melamine*



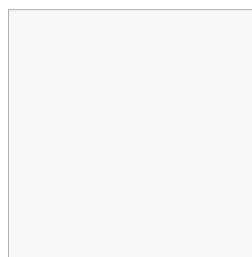
88 bianco opaco
matt white



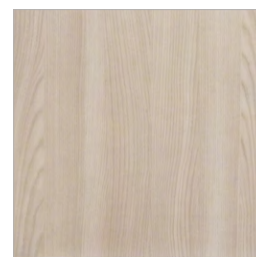
8A bianco larice
white larch



8B larice chiaro
light larch



8F bianco opaco
matt white



8G olmo chiaro
light elm



8I grigio creta opaco
matt grey clay



8L grigio grafite opaco
matt grey graphit



8P rovere crudo
raw oak

I colori dei vetri, del cuoio, del legno, dei metalli e dei laccati sono indicativi. Si precisa che la stampa su carta è una rappresentazione della realtà e la visione dei materiali e dei colori non può corrispondere perfettamente al prodotto finito. Inoltre si declina ogni responsabilità per richieste di accoppiamento, in quanto è tecnicamente impossibile mantenere la costanza di tono nel tempo.